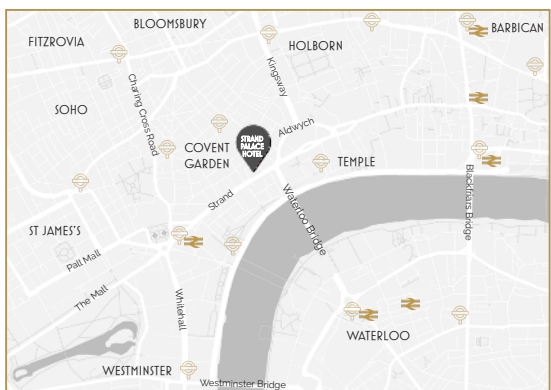




IN THE HEART OF LONDON

- ▷ Where the City meets the West End
- ▷ 7-minute walk to Trafalgar Square
- ▷ 10-minute walk to Charing Cross and Waterloo railway and Underground stations
- ▷ 10-minute walk to Covent Garden or Temple Underground stations
- ▷ 20-minute walk to Westminster
- ▷ Water taxi access from Embankment Pier
- ▷ Surrounded by the world's best theatres
- ▷ 5-minute walk to the Royal Opera House
- ▷ 10-minute walk to the Southbank
- ▷ Heathrow: 16.4 miles & 45 minutes by tube
- ▷ Gatwick: 28 miles & an hour by public transport
- ▷ London City: 8.4 miles & 40 minutes by tube



HOTEL SERVICES

- ▷ 785 guestrooms
- ▷ Standard, Superior & Deluxe room classes
- ▷ Complimentary high speed Wi-Fi throughout
- ▷ Concierge service
- ▷ Complimentary access to business centre with state of the art equipment
- ▷ Fitness centre with complimentary access
- ▷ Multilingual staff
- ▷ Express check out facility
- ▷ Laundry & dry cleaning services

	Location	Distance	Minutes		
	Charing Cross	0.3m	6	-	5
	Covent Garden	0.3m	4	-	6
	Embankment	0.4m	7	-	10
	Leicester Square	0.4m	11	-	7
	Temple	0.4m	12	11	6
	Holborn	0.5m	18	13	8
	Waterloo	0.7m	15	9	9
	Canary Wharf	4.6m	-	29	30
	Heathrow	16.4m	-	45	-
	Gatwick	28m	-	60	-
	London City	8.4m	-	40	-

AVAILABLE AMENITIES

- Air conditioning
- Complimentary High-speed Wi-Fi
- Complimentary minibar
- Complimentary dry bar
- Nespresso machine
- Tea & coffee making facilities
- Bathrobe & slippers
- White Company toiletries
- 24-hour room service
- Complimentary umbrella
- Complimentary phone calls
- Laptop safe
- Iron & ironing board
- Hypnos mattress
- Double glazing

RESTAURANTS & BARS

- CARVERY & GRILL**
Traditional British favourites served daily. A la carte, pre-theatre and buffet menus are available daily.
- THE GIN PALACE**
A relaxed and contemporary cocktail bar. Enjoy a late-night cocktail or afternoon tea with a gin twist.
- THE LOUNGE BAR**
Bright, spacious and in the hotel's heart, this laid-back area is perfect for a morning coffee, afternoon tea or early evening tiple.
- SACRED CAFÉ**
A New Zealand-inspired café serving expertly made coffee, tea, tempting cakes and snacks.

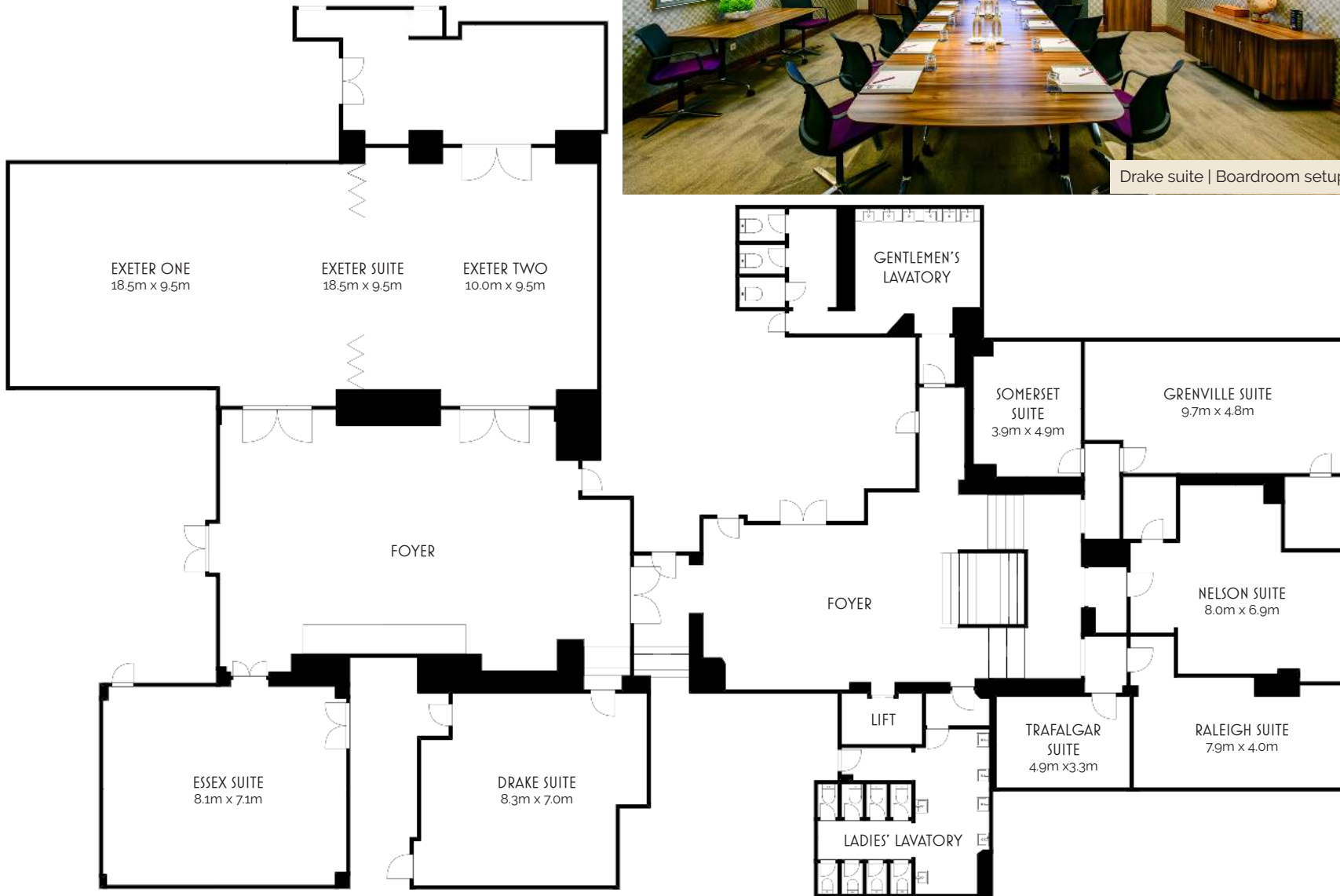
CONFERENCE & EVENTS

- ▷ Dedicated 680m² events floor
- ▷ Home to nine versatile meeting rooms
- ▷ High-speed Wi-Fi throughout
- ▷ Built in audio-visual technology
- ▷ All rooms feature air conditioning
- ▷ Suitable for meetings for as few as eight delegates
- ▷ Capacity for up to 250 delegates
- ▷ Refreshment centre
- ▷ Flexible rooms able to cater any type of event

MEETINGS & EVENTS FLOOR PLAN



Drake suite | Boardroom setup



CAPACITIES

Suite	Room size	Theatre	Cabaret	Classroom	Boardroom	U-shape	Horseshoe	Banquet	Dinner dance	Seated buffet	Standing buffet	Drinks reception
Exeter	199m ²	230	84	116	72	65	•	170	130	140	200	250
Exeter One	100m ²	120	48	60	40	40	48	80	60	70	100	130
Exeter Two	73m ²	80	36	48	25	25	31	70	50	50	80	100
Essex	63m ²	70	30	36	22	24	30	50	•	40	50	70
Drake	56m ²	•	•	•	16	•	•	•	•	•	•	•
Grenville	57m ²	50	24	24	25	25	•	30	•	20	40	50
Nelson	40m ²	30	16	20	15	15	•	30	•	20	30	40
Raleigh	40m ²	20	•	20	15	•	•	15	•	•	20	20
Somerset	23m ²	•	•	20	8	•	•	•	•	•	•	•
Trafalgar	15m ²	•	•	•	8	•	•	•	•	•	•	•